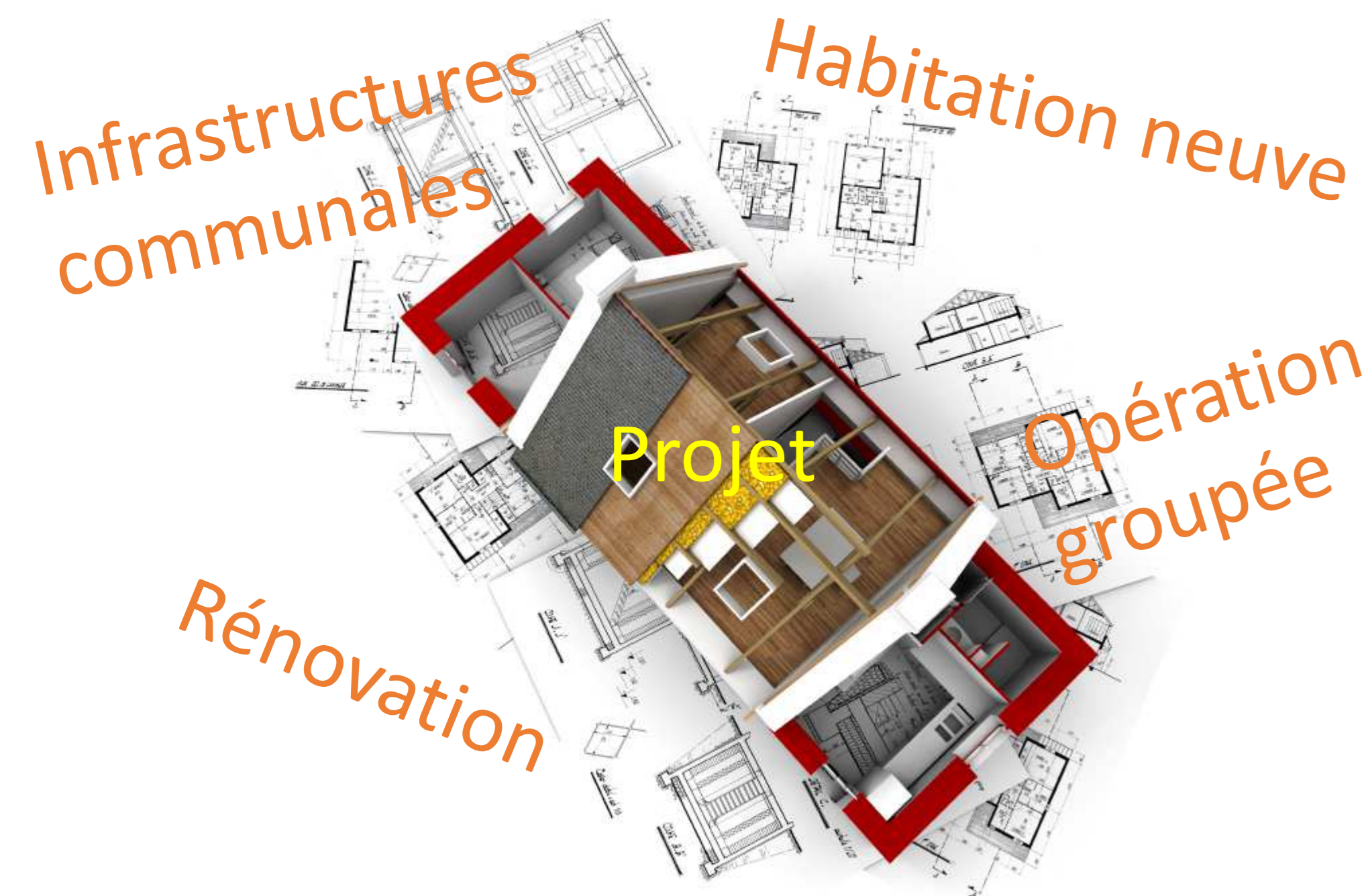
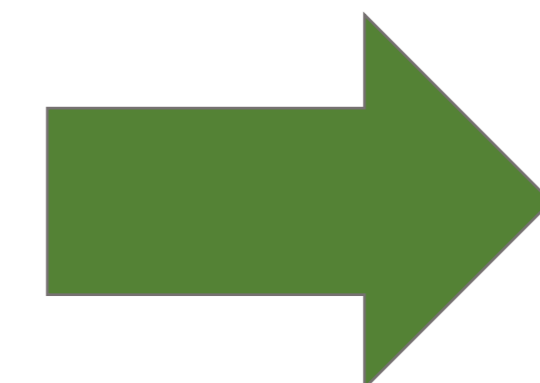


# ETUDES DE SOL ET DE FILIERES D'ASSAINISSEMENT NON COLLECTIF

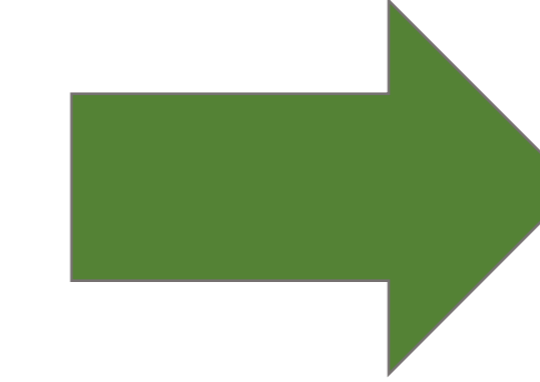
SG ENVIRONNEMENT est adhérent du SYNABA



**ETUDE DU CONTEXTE ET  
DU LOGEMENT**



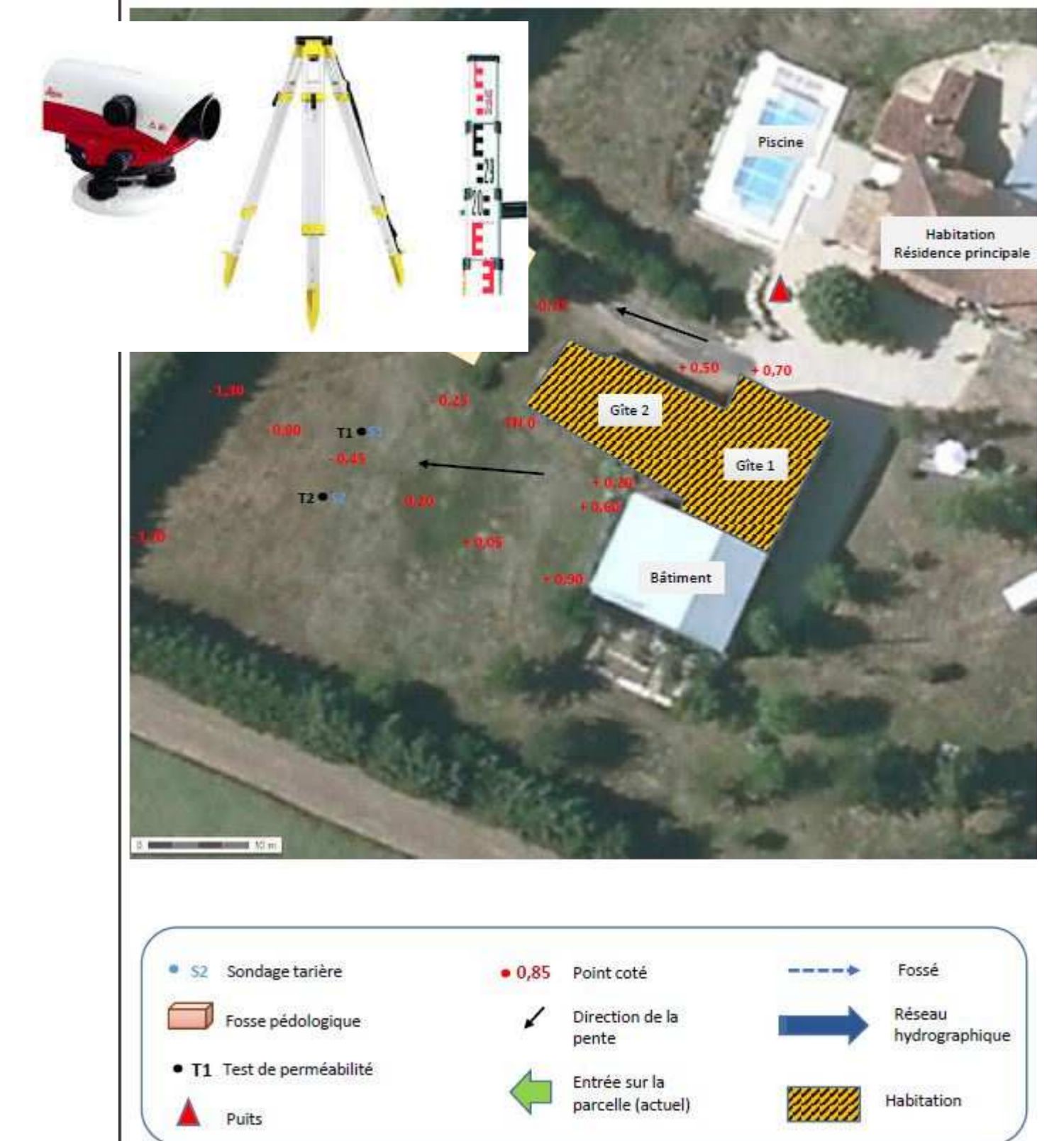
**ETUDES DU SOL**



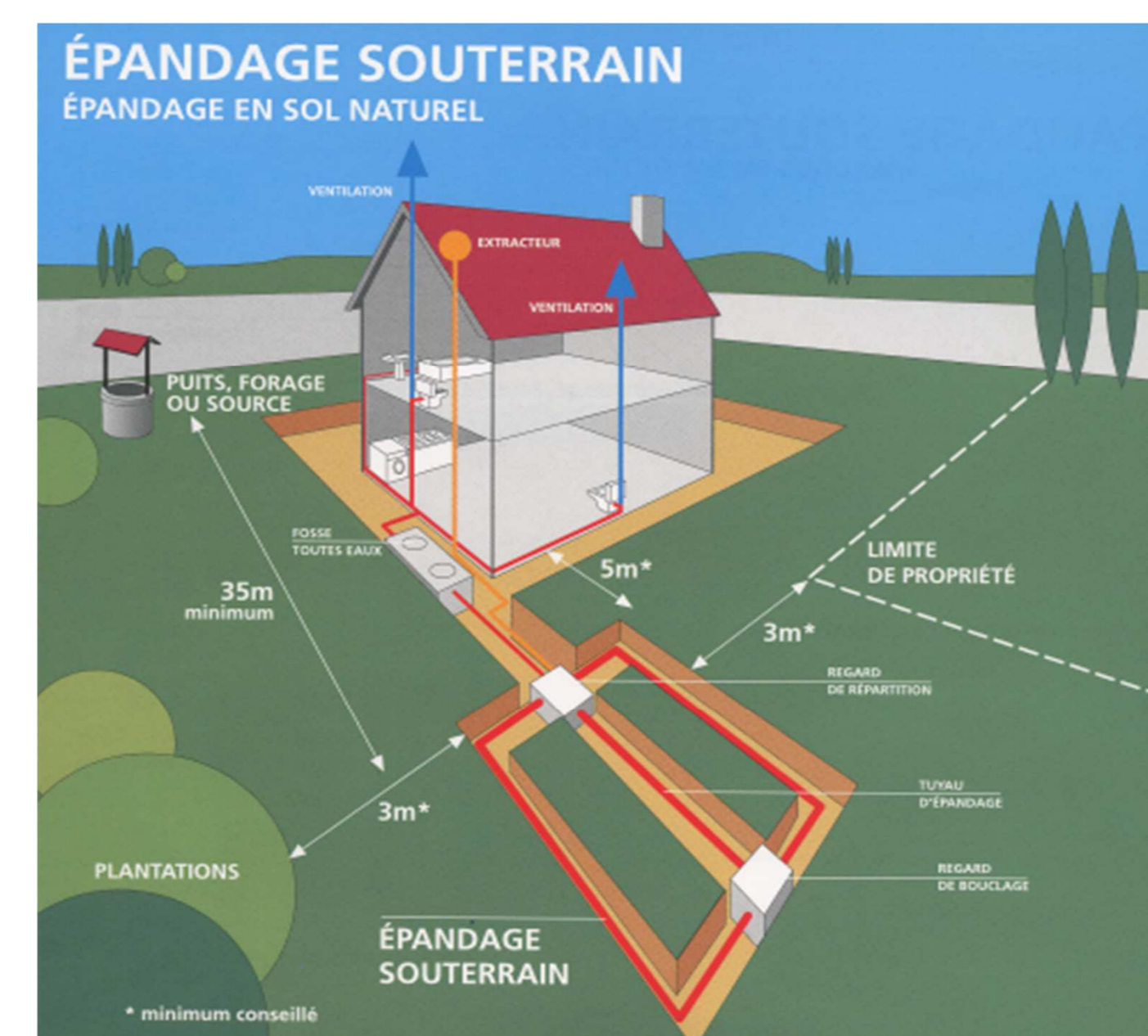
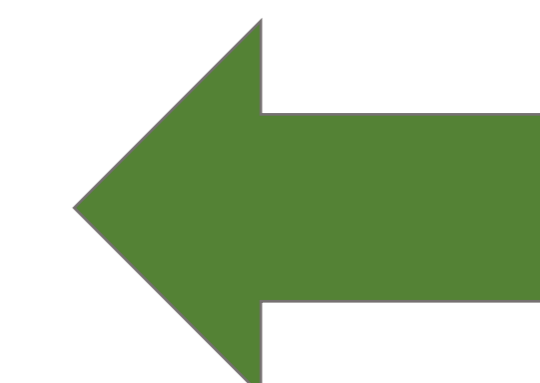
**MESURES DE LA  
PERMEABILITE DU SOL**



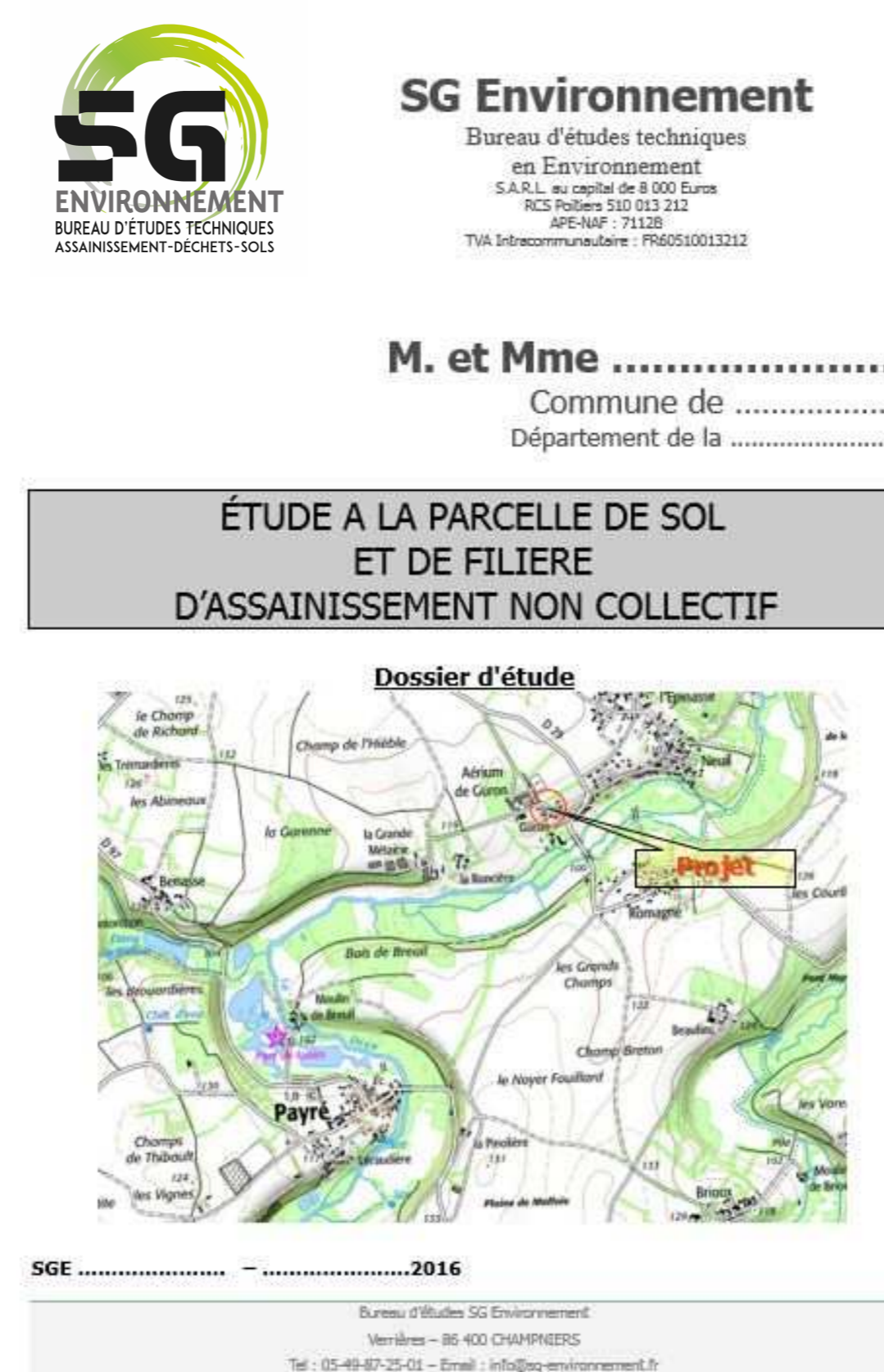
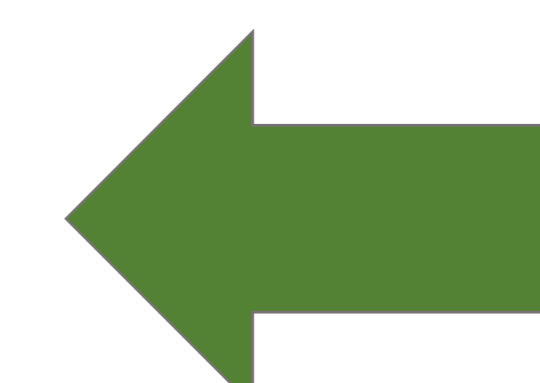
LOCALISATION : SONDAGES - TESTS - COTES ALTIMÉTRIQUES



**RELEVÉS  
TOPOGRAPHIQUES**



**DEFINITION DES FILIERES ET REDACTION DU  
DOCUMENT D'ETUDE**



Service Public  
d'Assainissement  
non Collectif

**Validation par le  
S.P.A.N.C.  
Autorisation des travaux**

